

## Appendix A2 - Image Key

### 2\* Cnidaria



Image: Anders L. Garm

### 5\* Chordata



Image: Lykke K.B. Clausen & Nadja Møbjerg

### 6\* Nematoda



Image: Lykke K.B. Clausen & Nadja Møbjerg

### 9\* Rotifera



Image: Lykke K.B. Clausen

### 10\* Cyclophora



Image: Reinhardt M. Kristensen & Peter Funch

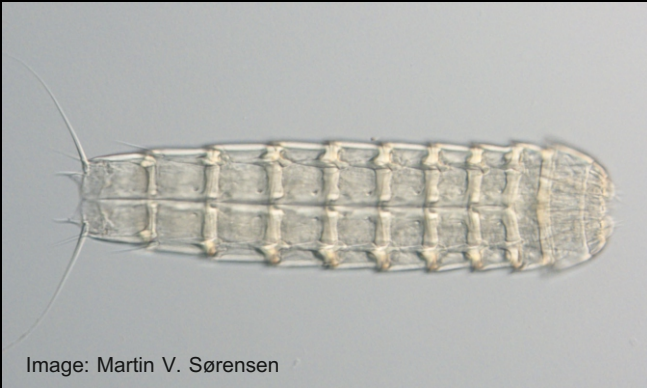
### 11\* Micrognathozoa



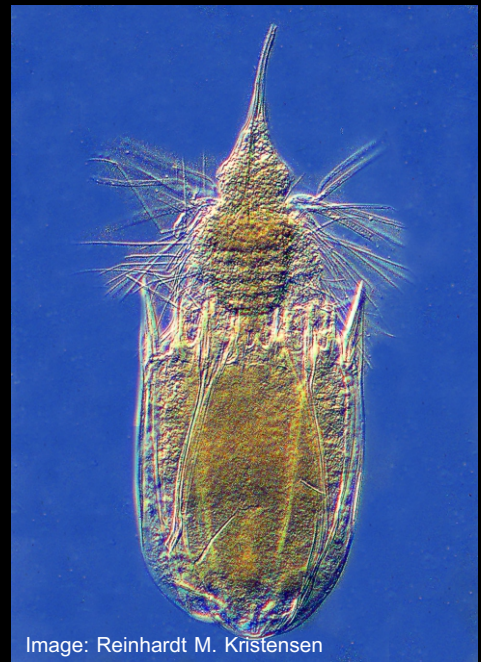
Image: Reinhardt M. Kristensen & Peter Funch



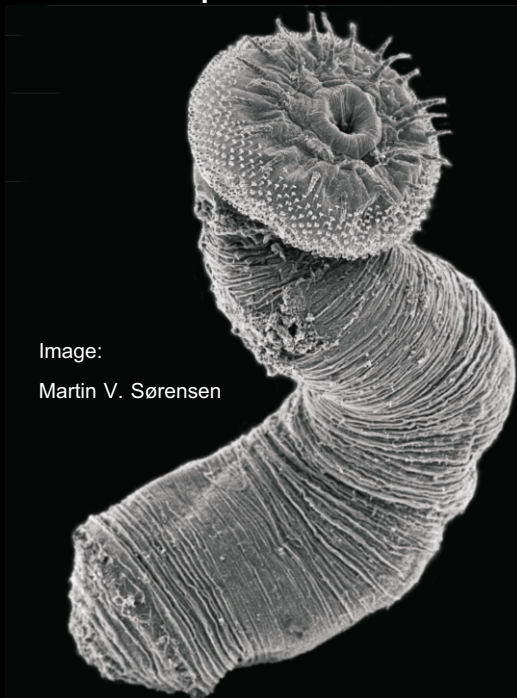
### 13\* Kinorhyncha



### 15\* Loricifera



### 16\* Priapulida



### 19\* Tardigrada



### 20\* Arthropoda, Insecta



### 21\* Arthropoda, Crustacea

