

# User manual for Timer

## Operating Instructions (text from product info, “Easy Timer”):

- Pull out plastic strip from battery compartment to activate timer (if not already done!).
- Turn on timer by pressing the START/STOP button.

## Count Up


1. Press START/STOP to start counting
2. Press START/STOP to pause, and again to resume counting.
3. To reset to 00:00 press both the MIN and SEC buttons together.

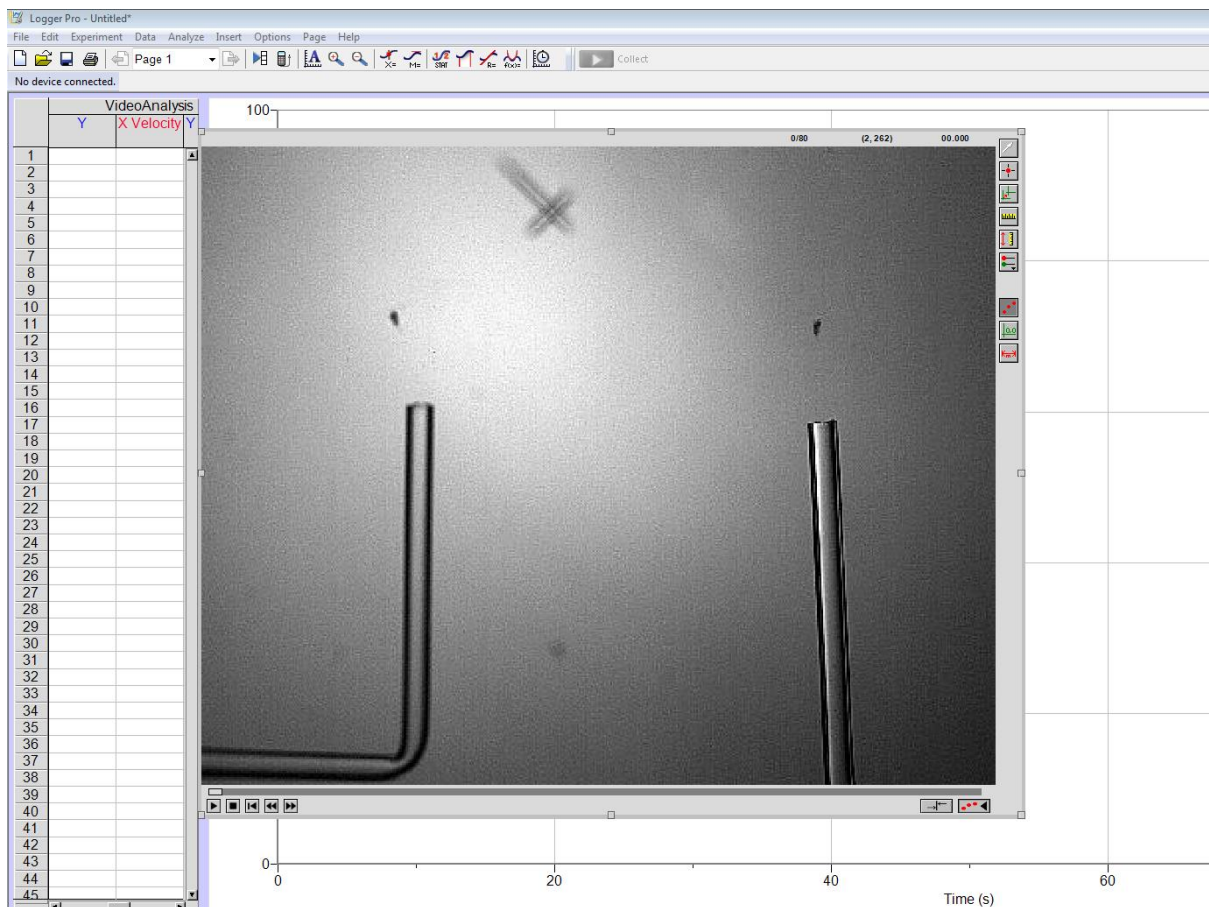
## Count Down







1. Press both the MIN and SEC buttons to reset timer to 00:00.
2. Press MIN to set minutes & SEC to set seconds.
3. Press START/STOP to start and again to stop.
4. When preset time is reached, press any button to stop alarm.

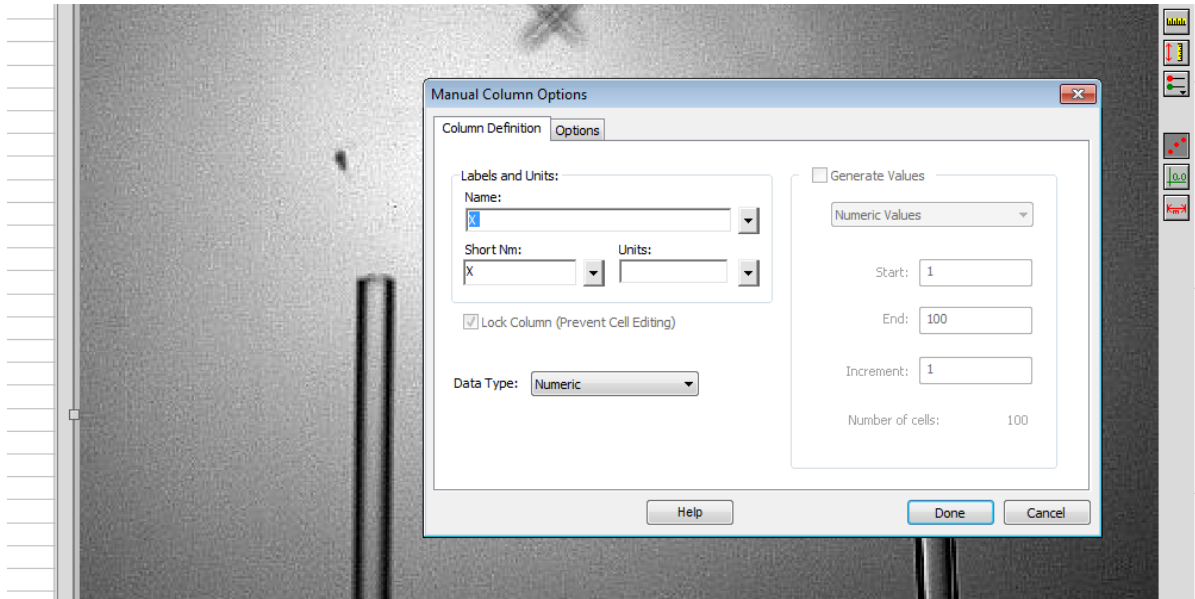
# User manual for Video analysis in Logger Pro, details

Open LoggerPro 3.8.6.2 from the desktop.

1. Insert > Movie > Desktop (choose the video you want to analyse)
2. Right-click on the video > Movie options > Override frame rate (write 500)>OK
3. Click on the icon  under the video (= "Enable Video Analysis"). You then get at column of icons to the right of the video, see the figure below



4. Click on the icon  to the right of the video (Set Scale)
5. Click on the icon  (Set Origin)
6. Go through the frames step by step by clicking the icon  (Next Frame).
7. Click  (Play) below the video
8. Use the icon  (marker) to track your object. You may want to "Toggle Trails" to avoid seeing your previous markings. For this, use the icon .
9. You may want to rename your variables: Double click on the table column for your variable to get a dialogue box, see figure below.



10. You may want to change the number of variables to be seen in the same graph. Click on the variable(s) on the second axis, choose "More" to get a dialogue box, tick the variables you want to be show, see figure below.

